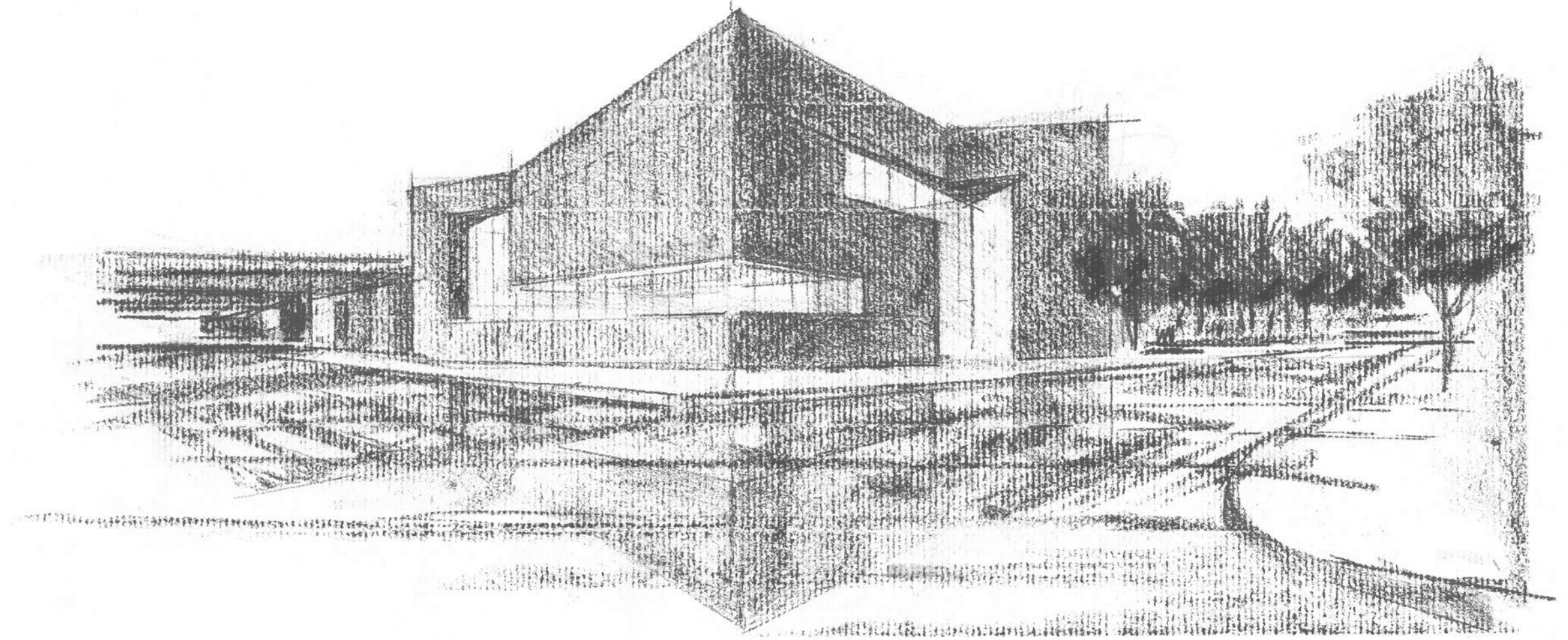


REGO PARK COMMUNITY LIBRARY QUEENS PUBLIC LIBRARY



WEISS/MANFREDI
ARCHITECTURE / LANDSCAPE / URBANISM

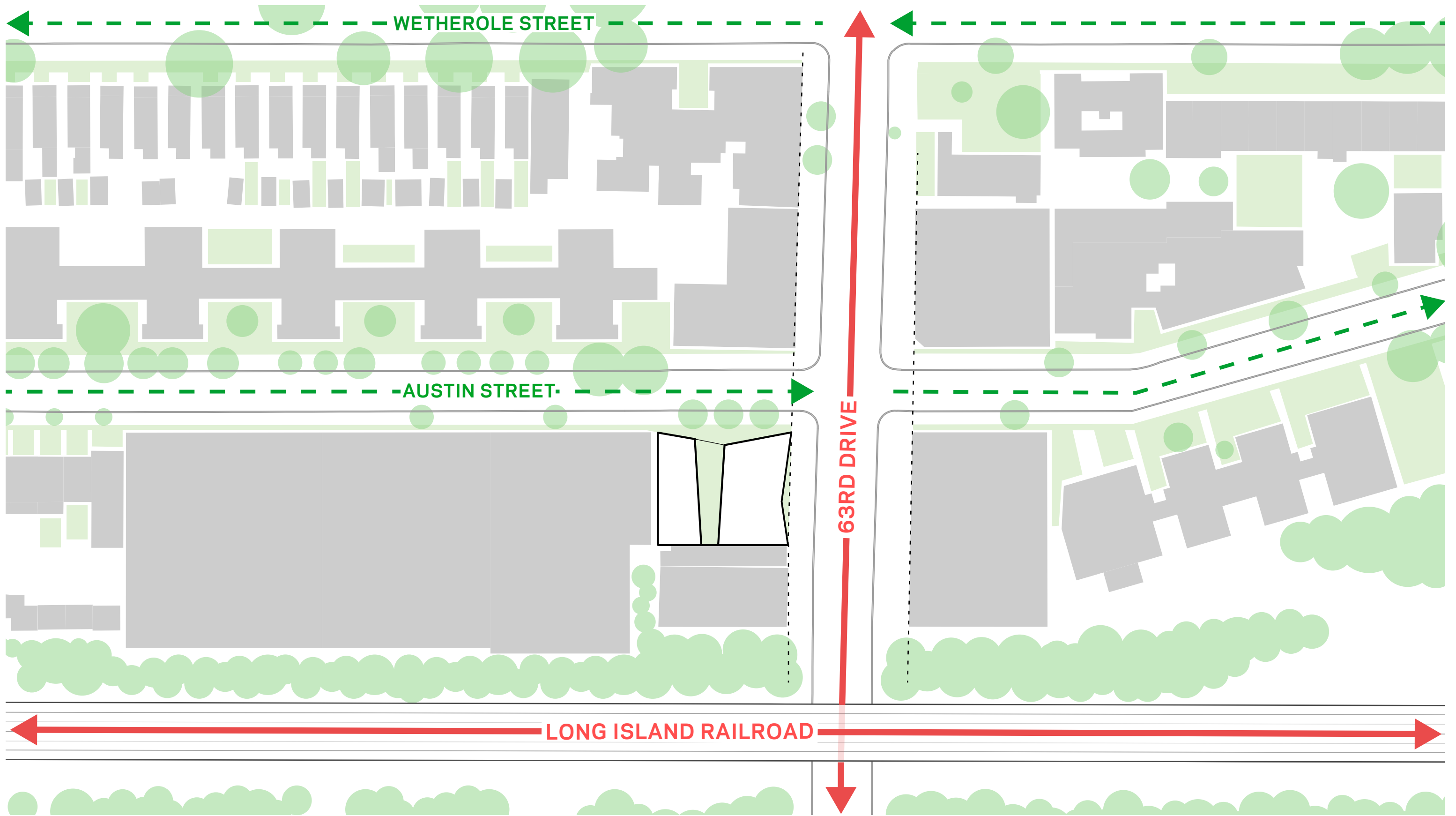
QUEENS PUBLIC LIBRARY / DDC

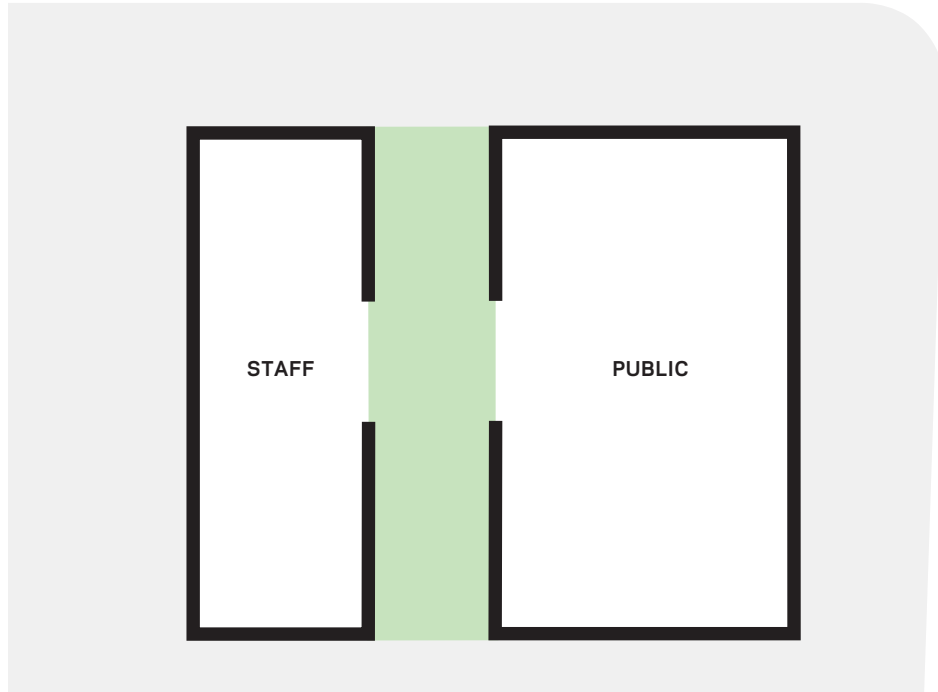
COMMUNITY BOARD PRESENTATION
SEPTEMBER 12, 2024

NEW PROJECTED SCHEDULE

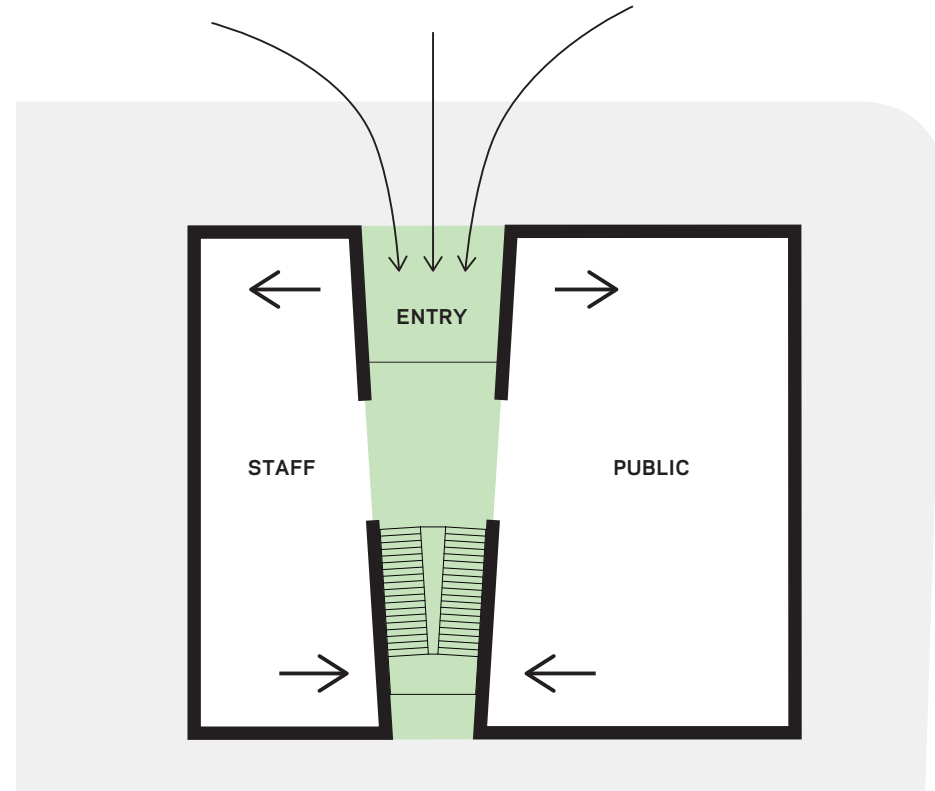
Current Phase: Construction Procurement
Projected Construction Start: Spring 2025
Project Duration: 3 years
Construction Budget: \$46.3M



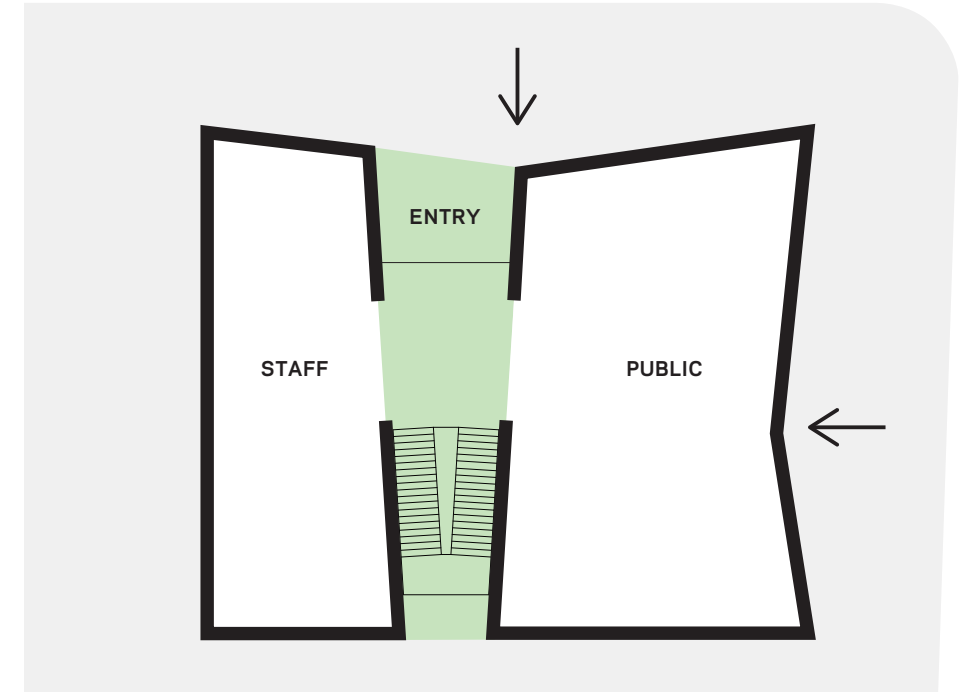




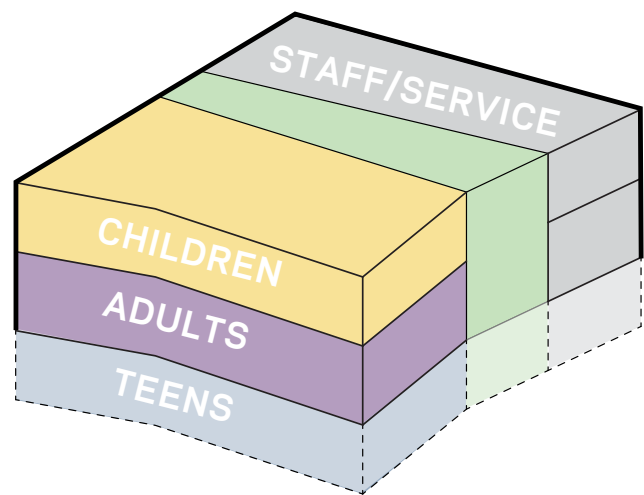
1. SEPARATE PROGRAM TYPES AND LINK WITH A GENEROUS CIRCULATION ZONE



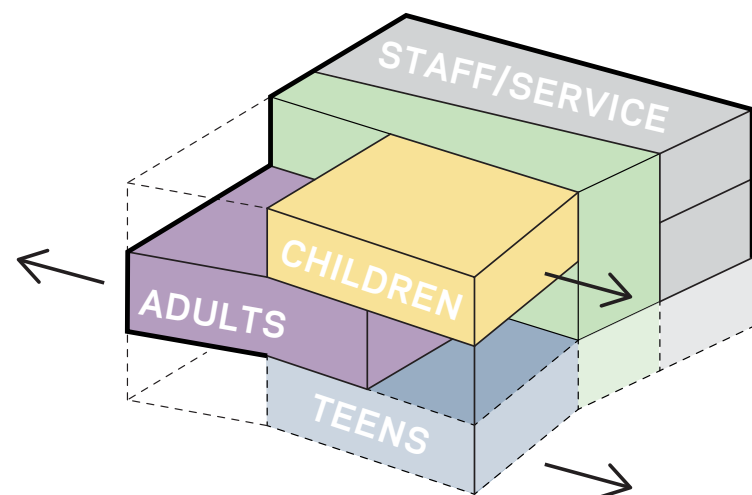
2. ADJUST ANGLES TO ALLOW FOR AN INVITING ENTRY AND A NESTLED STAIR



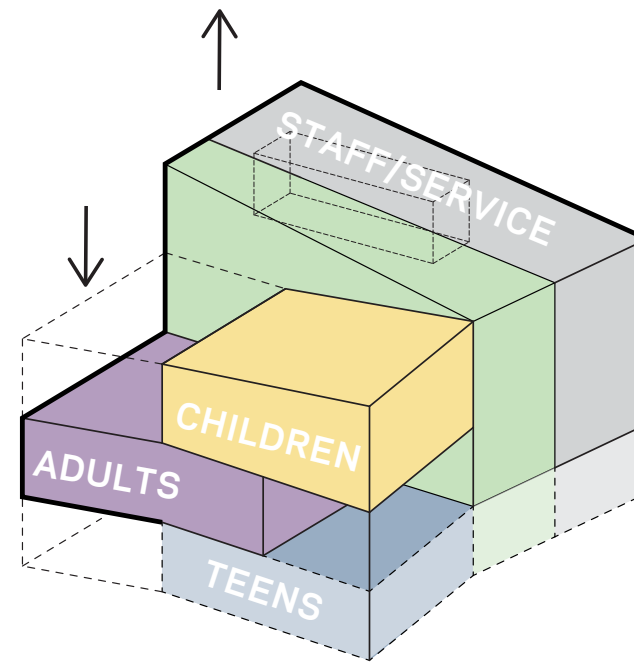
3. PUSH IN ENTRY FACADE FOR OBLIQUE VIEWS ALONG BUSY STREET



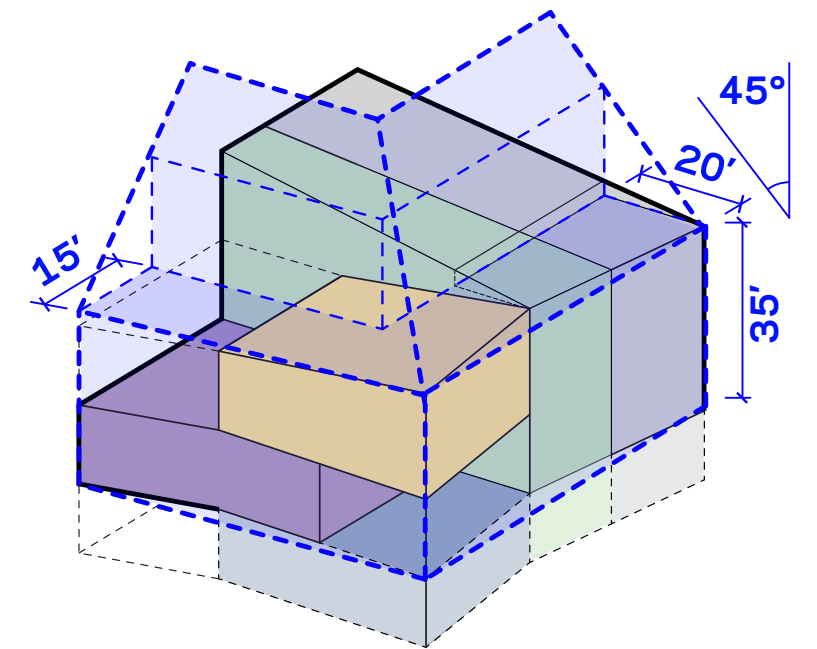
1. ORGANIZE PUBLIC PROGRAM BY FLOOR



2. PULL APART PROGRAM FOR VISUAL CONNECTION AND DAYLIGHT



3. SHAPE ROOFLINE TO SCALE SPACES AND INCORPORATE MEP REQUIREMENTS



4. CONFORMANCE TO ZONING ENVELOPE



LOST BATTALION HALL REC CENTER, REGO PARK



HISTORIC DRAKE THEATER, REGO PARK (DEMOLISHED)



RESSURECTION ASCENSION CHURCH, REGO PARK



TUDOR-STYLE HOME + GREEN SLATE ROOF, REGO PARK



TYPICAL COPPER (OXIDIZED) DETAILS, REGO PARK

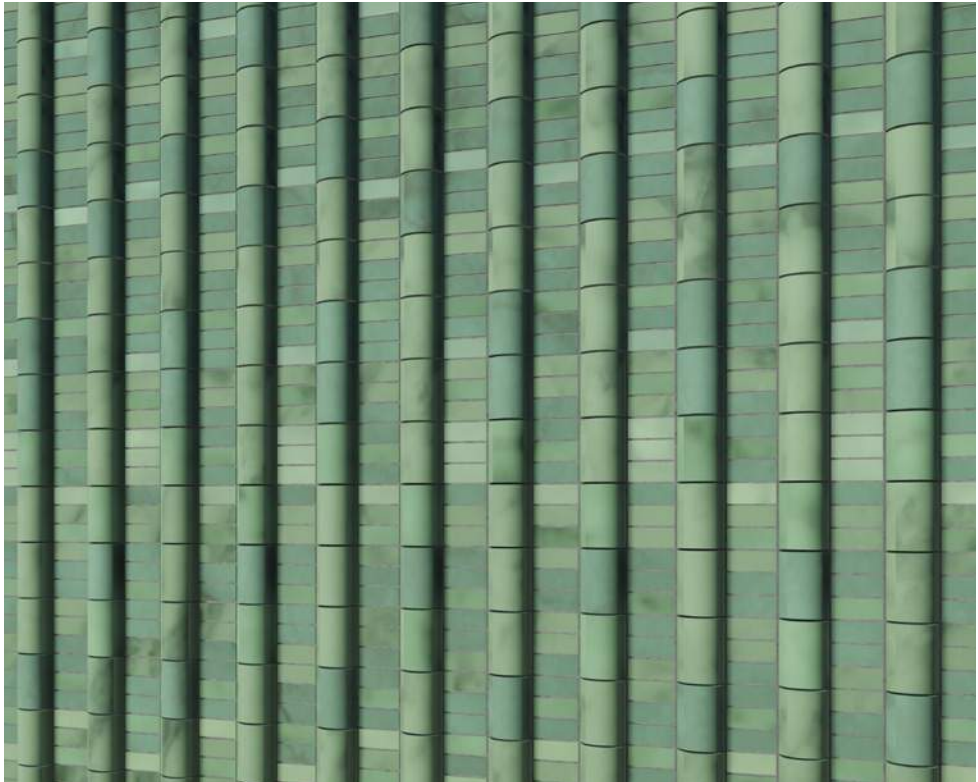


TYPICAL COPPER (OXIDIZED) DETAILS, REGO PARK





FACADE STUDY - MOTTLED FLAT BRICK



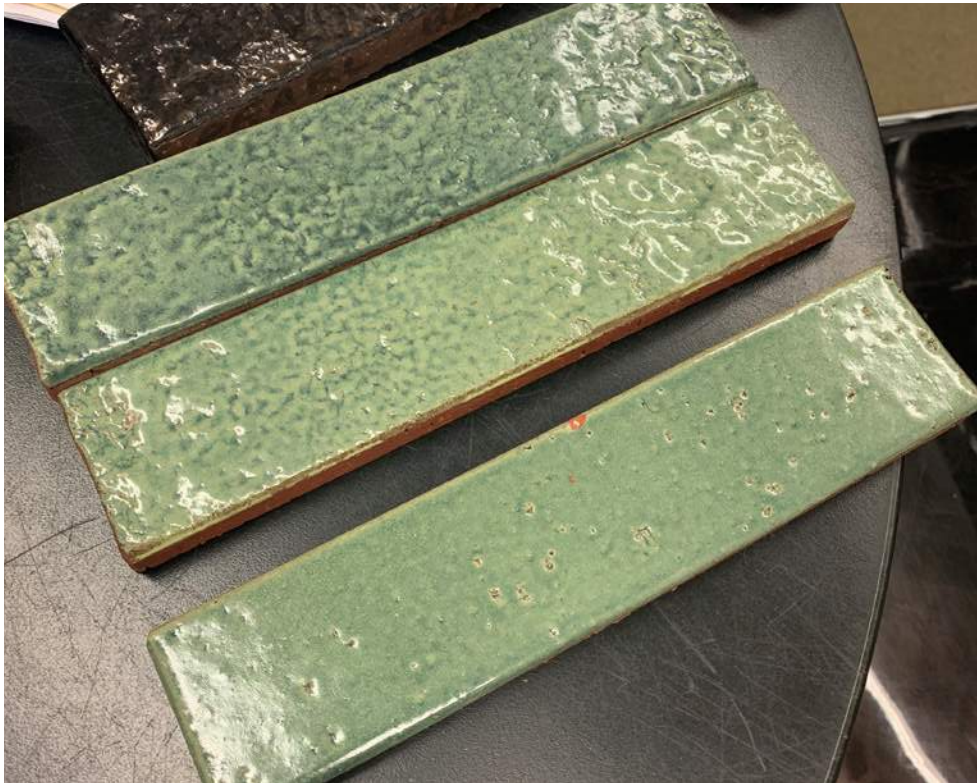
FACADE STUDY - EXTRUDED BRICK



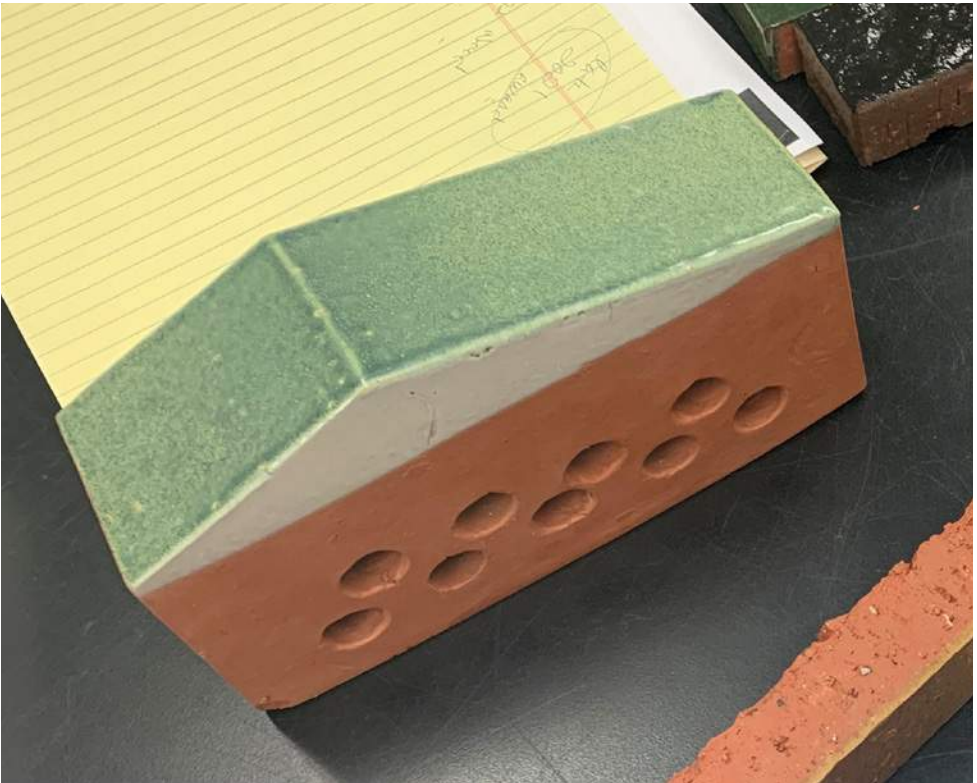
FACADE EXAMPLE - EXTRUDED BRICK



FACADE EXAMPLE - MOTTLED FLAT BRICK



GLAZED BRICK SAMPLES



GLAZED BRICK SAMPLES



WEISS / MANFREDI
QUEENS PUBLIC LIBRARY / DDC

REGO PARK COMMUNITY LIBRARY
SEPTEMBER 12, 2024

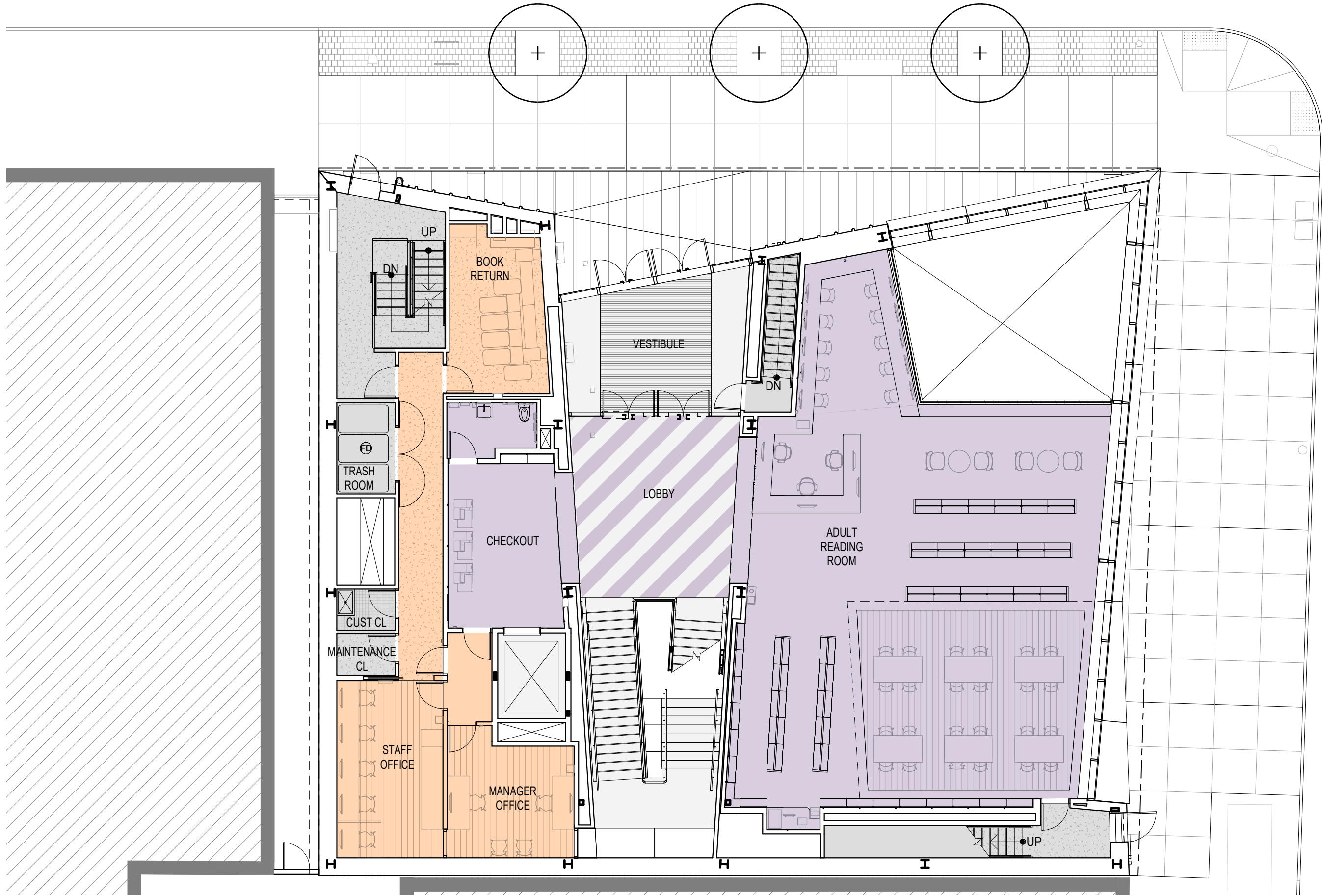
EXISTING
VIEW FROM INTERSECTION



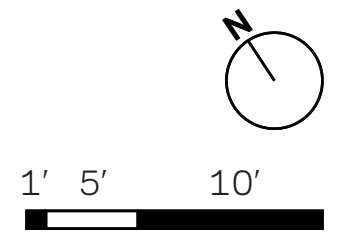
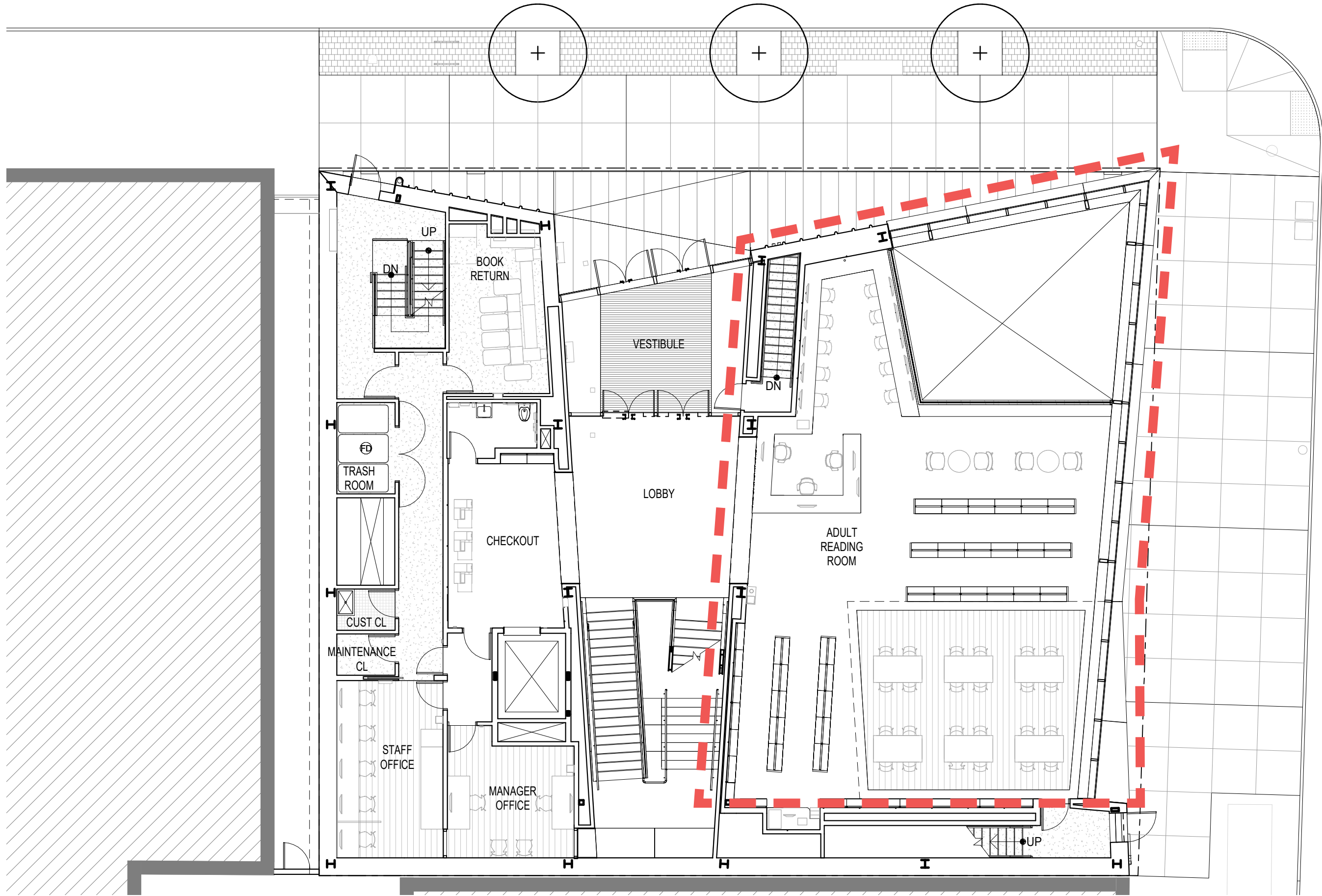
WEISS / MANFREDI
QUEENS PUBLIC LIBRARY / DDC

REGO PARK COMMUNITY LIBRARY
SEPTEMBER 12, 2024

PROPOSED RENDERING
VIEW FROM INTERSECTION



- ADULTS
- CHILDREN
- TEENS
- STAFF
- MULTIPURPOSE
- CIRCULATION
- SERVICES



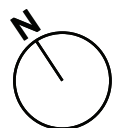
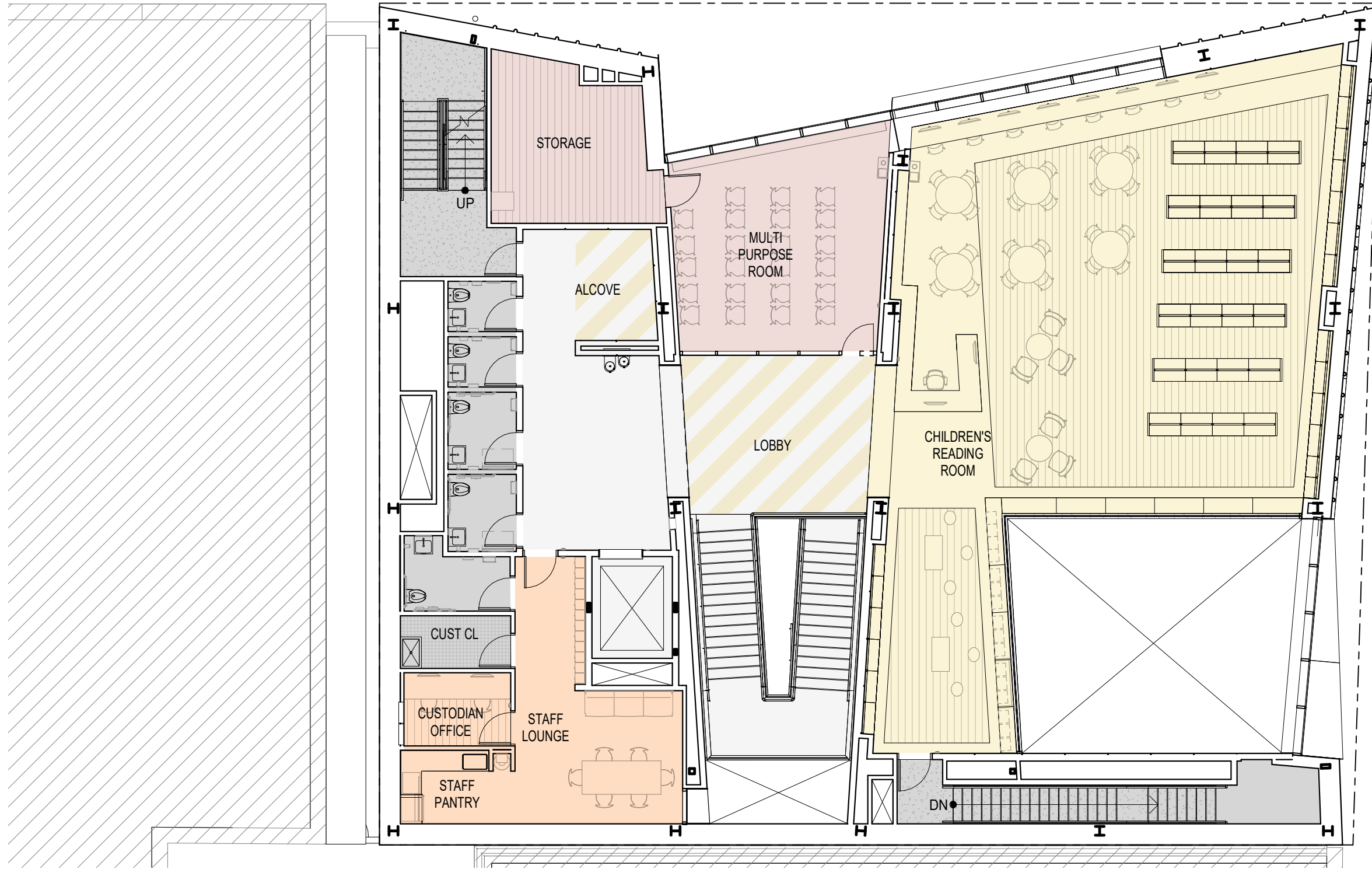


WEISS / MANFREDI
QUEENS PUBLIC LIBRARY / DDC

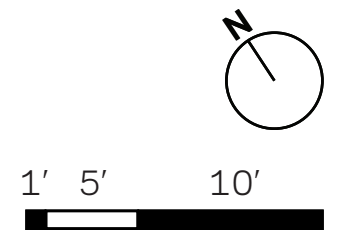
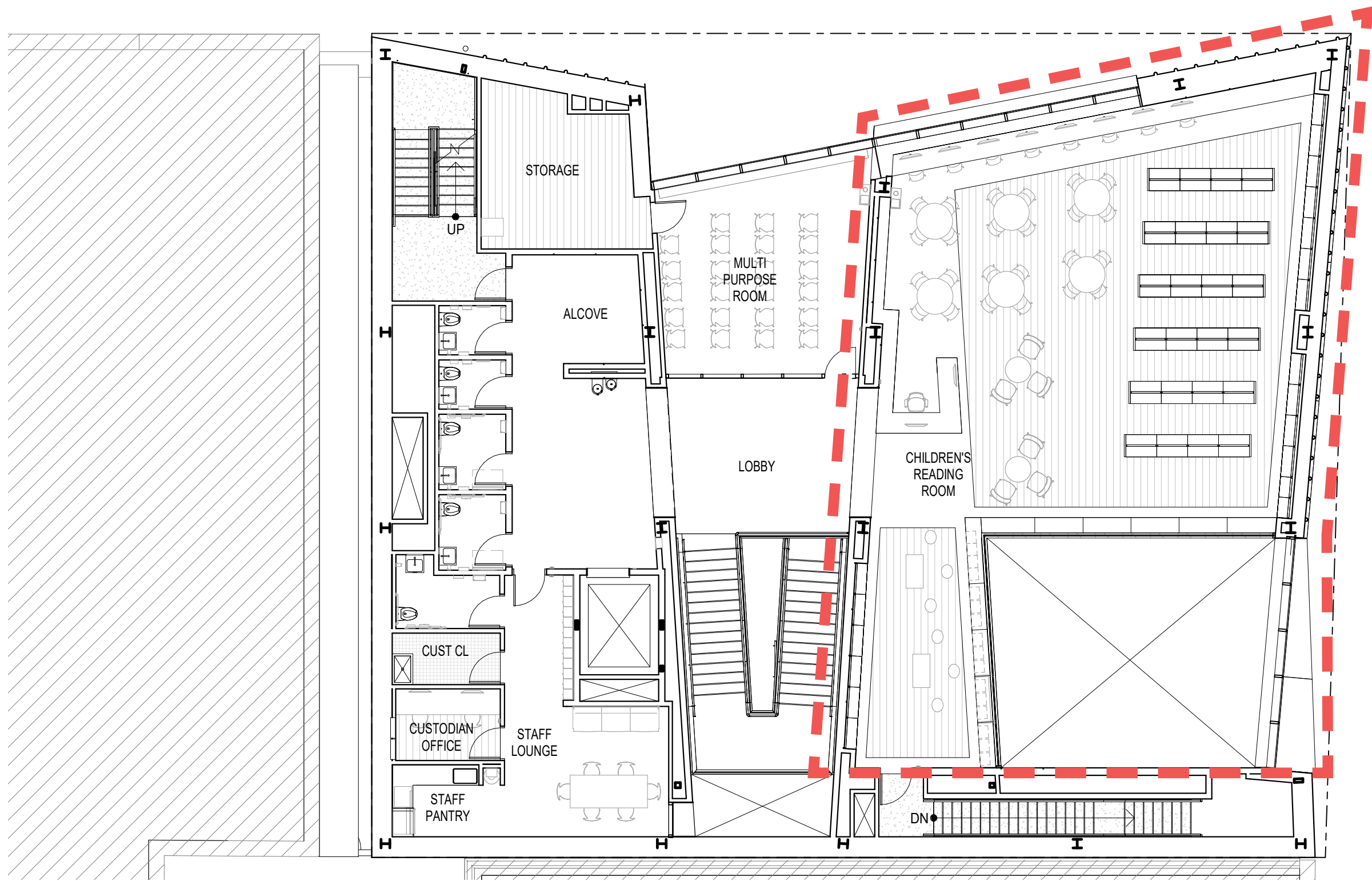
REGO PARK COMMUNITY LIBRARY
SEPTEMBER 12, 2024

PROPOSED RENDERING
VIEW OF ADULT READING ROOM

- ADULTS
- CHILDREN
- TEENS
- STAFF
- MULTIPURPOSE
- CIRCULATION
- SERVICES

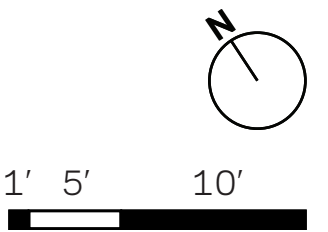
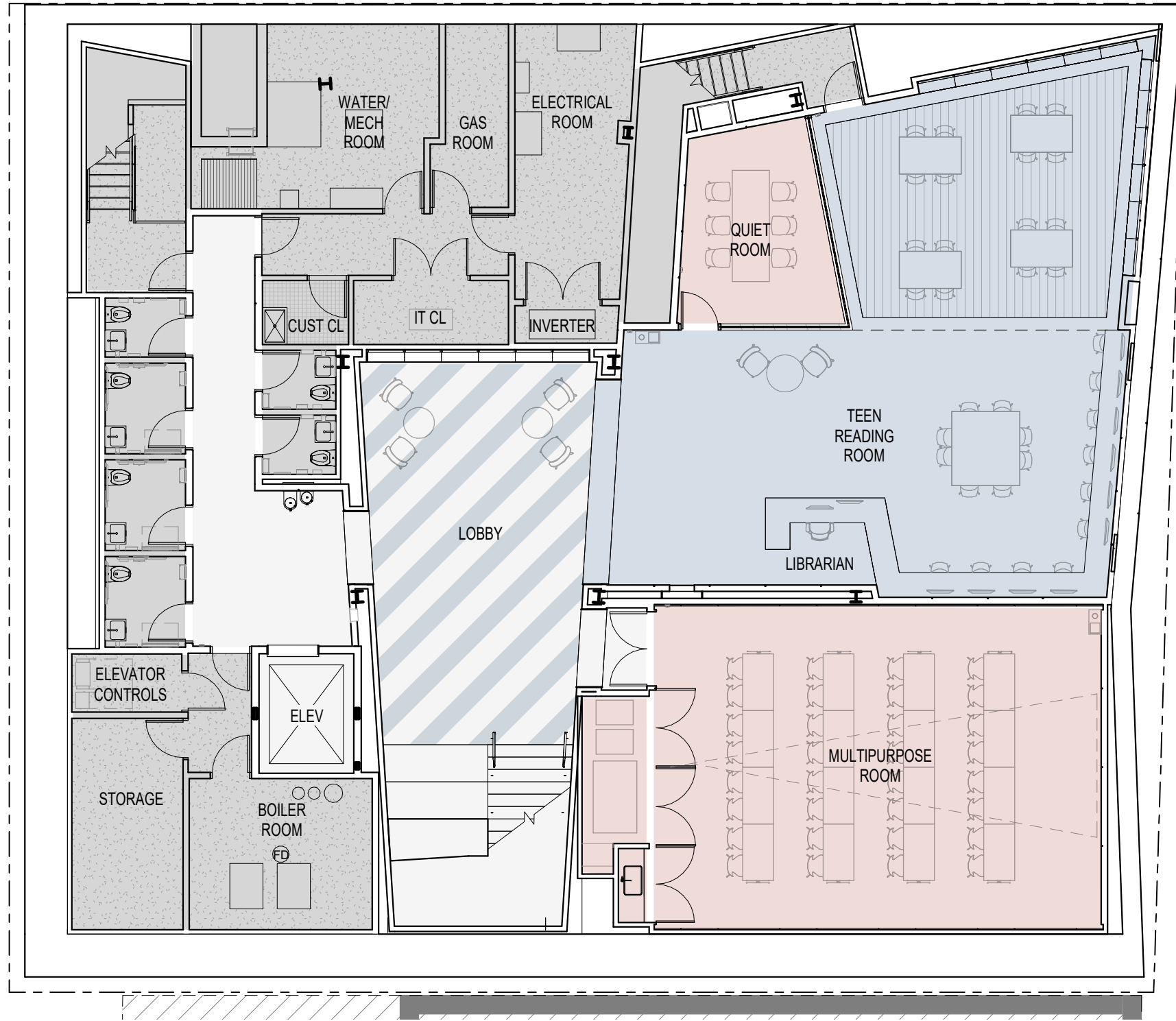
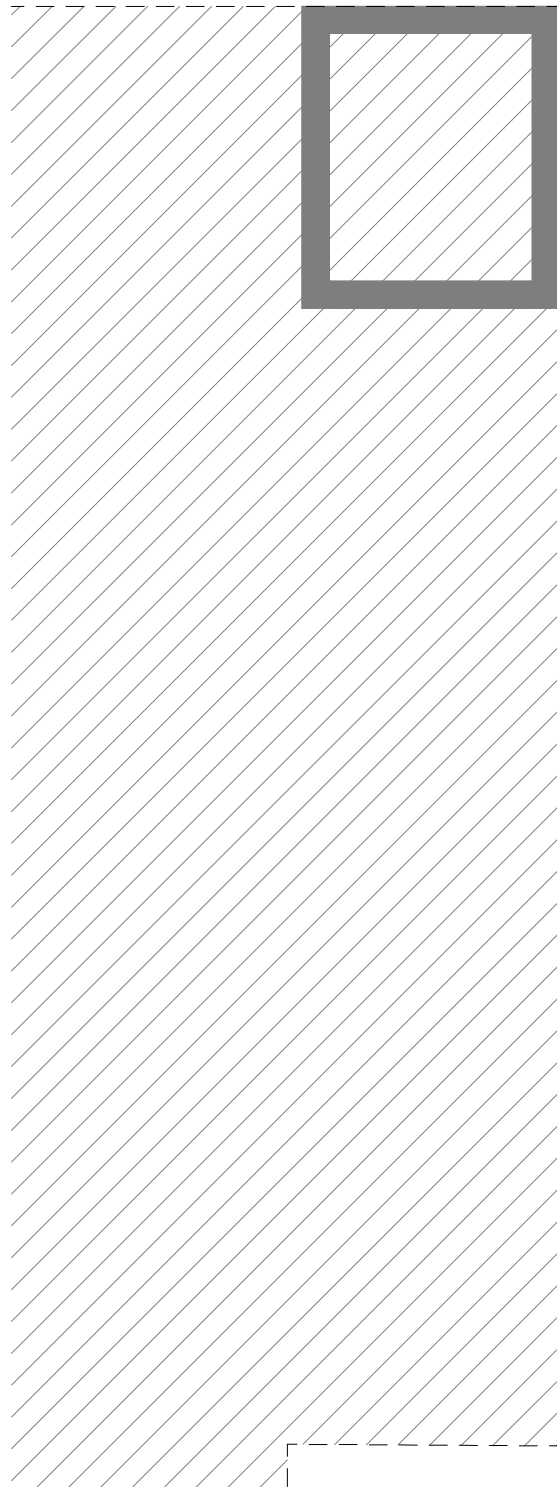


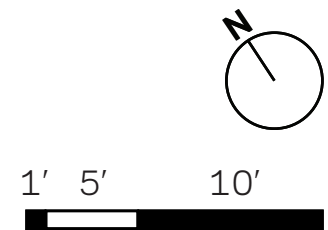
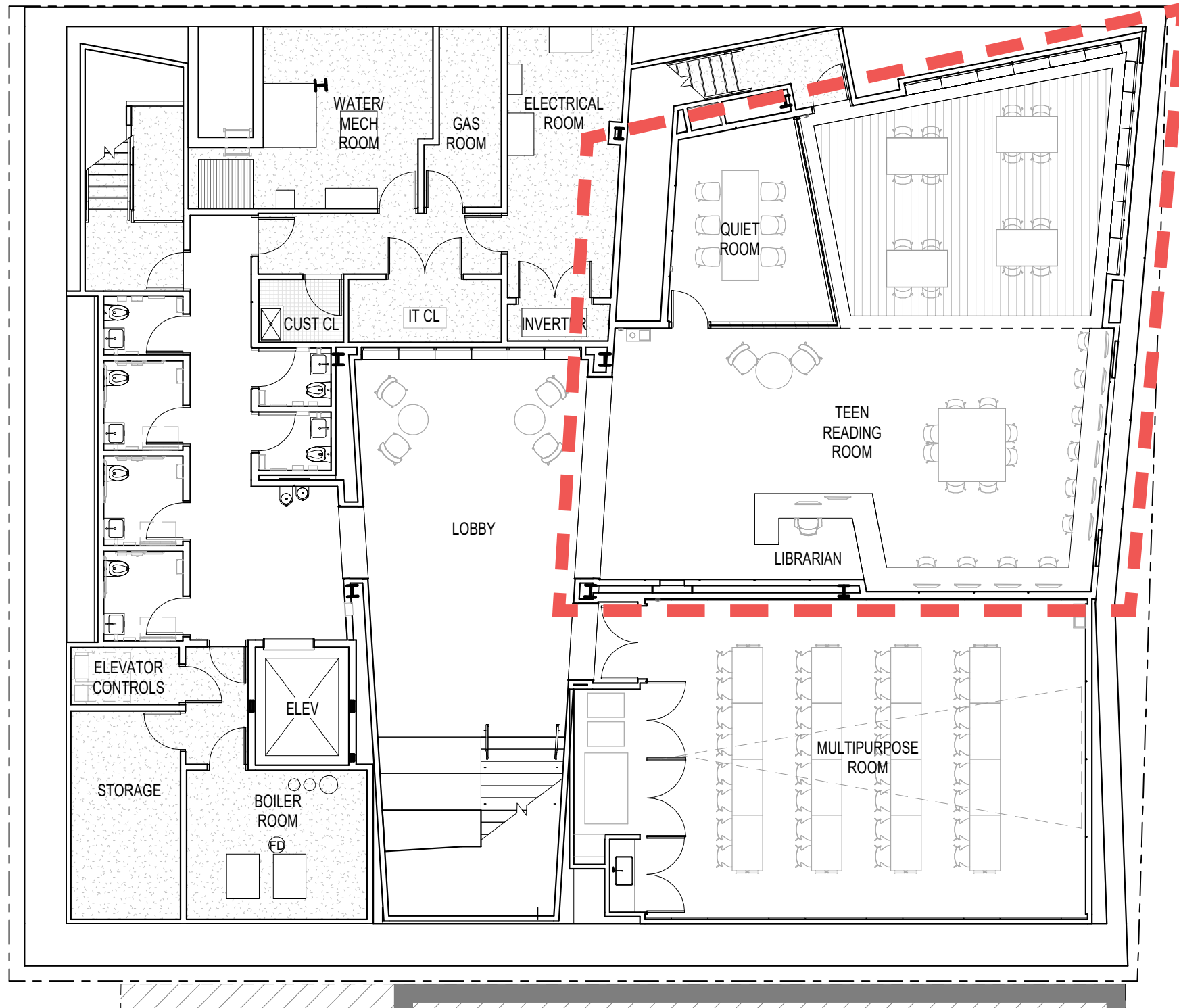
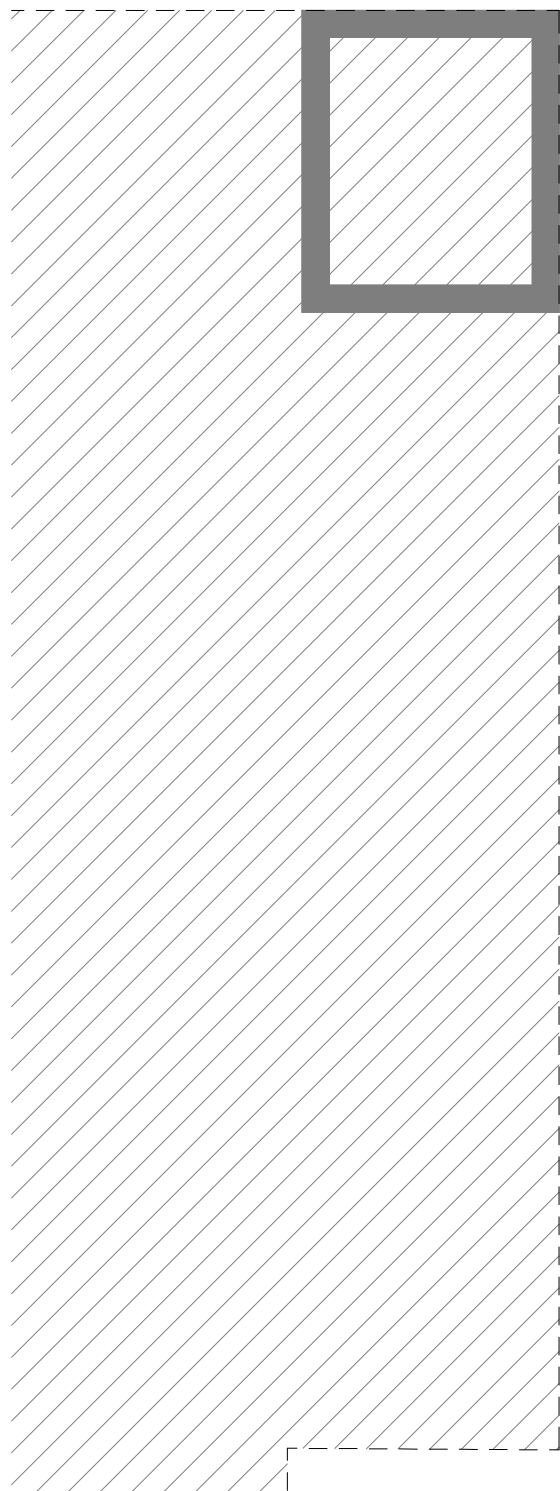
1' 5' 10'



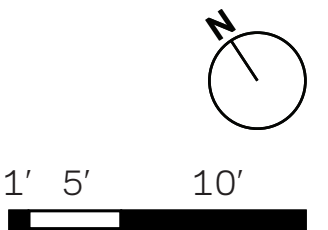
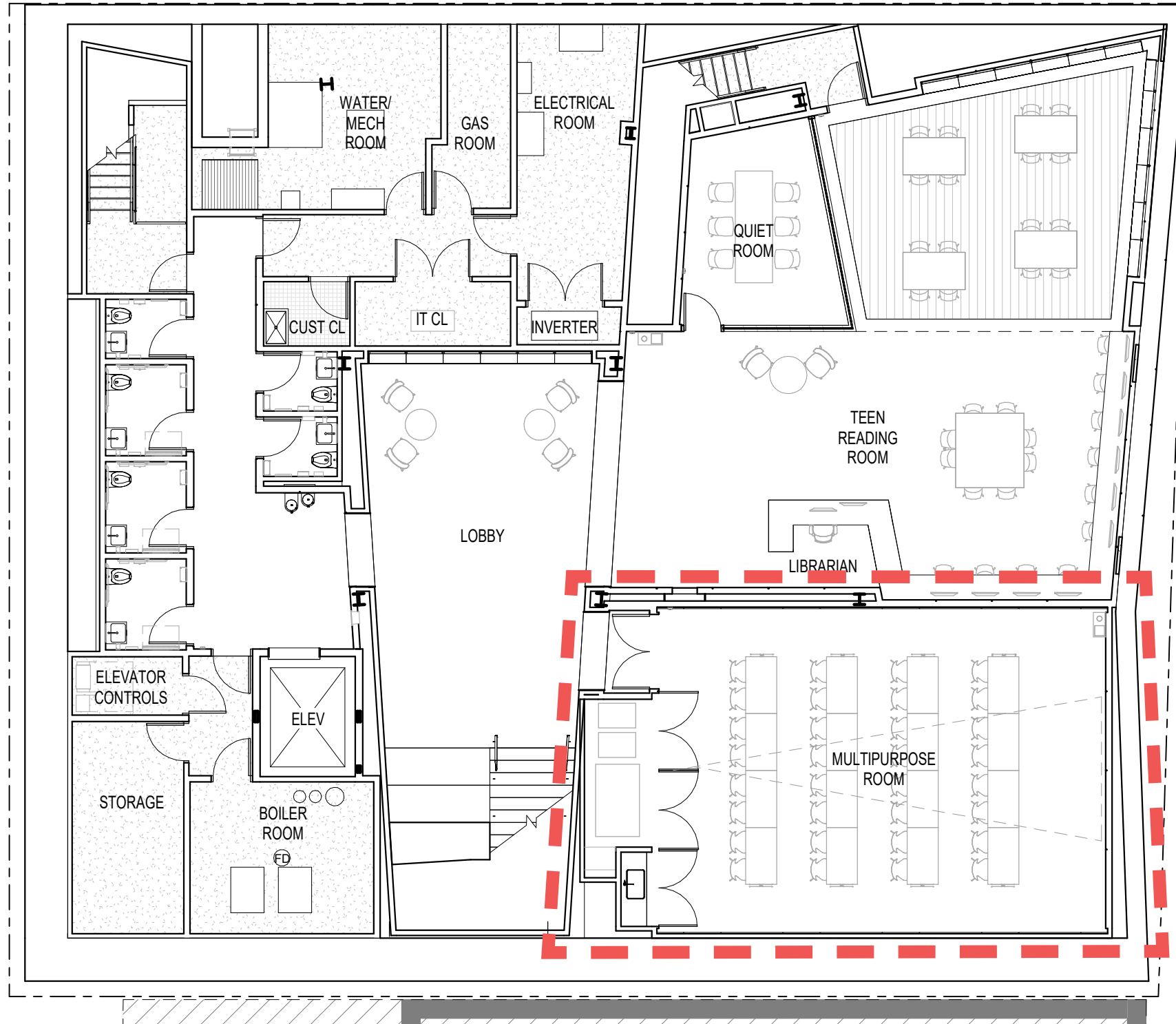
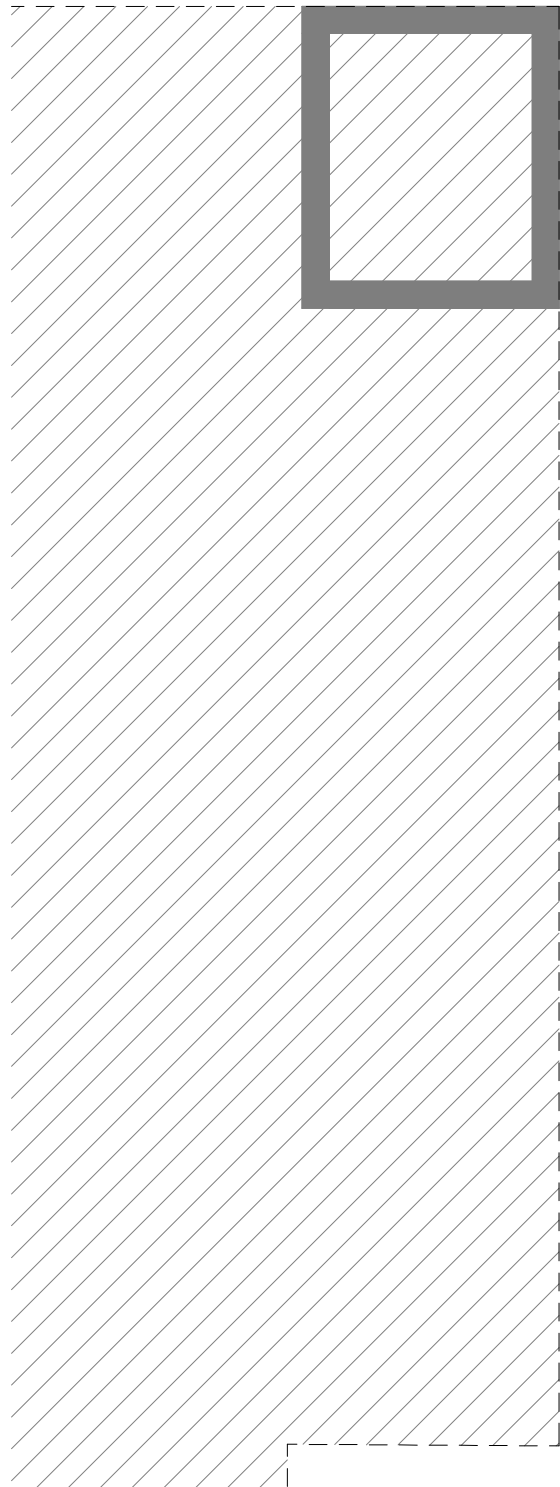


- ADULTS
- CHILDREN
- TEENS
- STAFF
- MULTIPURPOSE
- CIRCULATION
- SERVICES

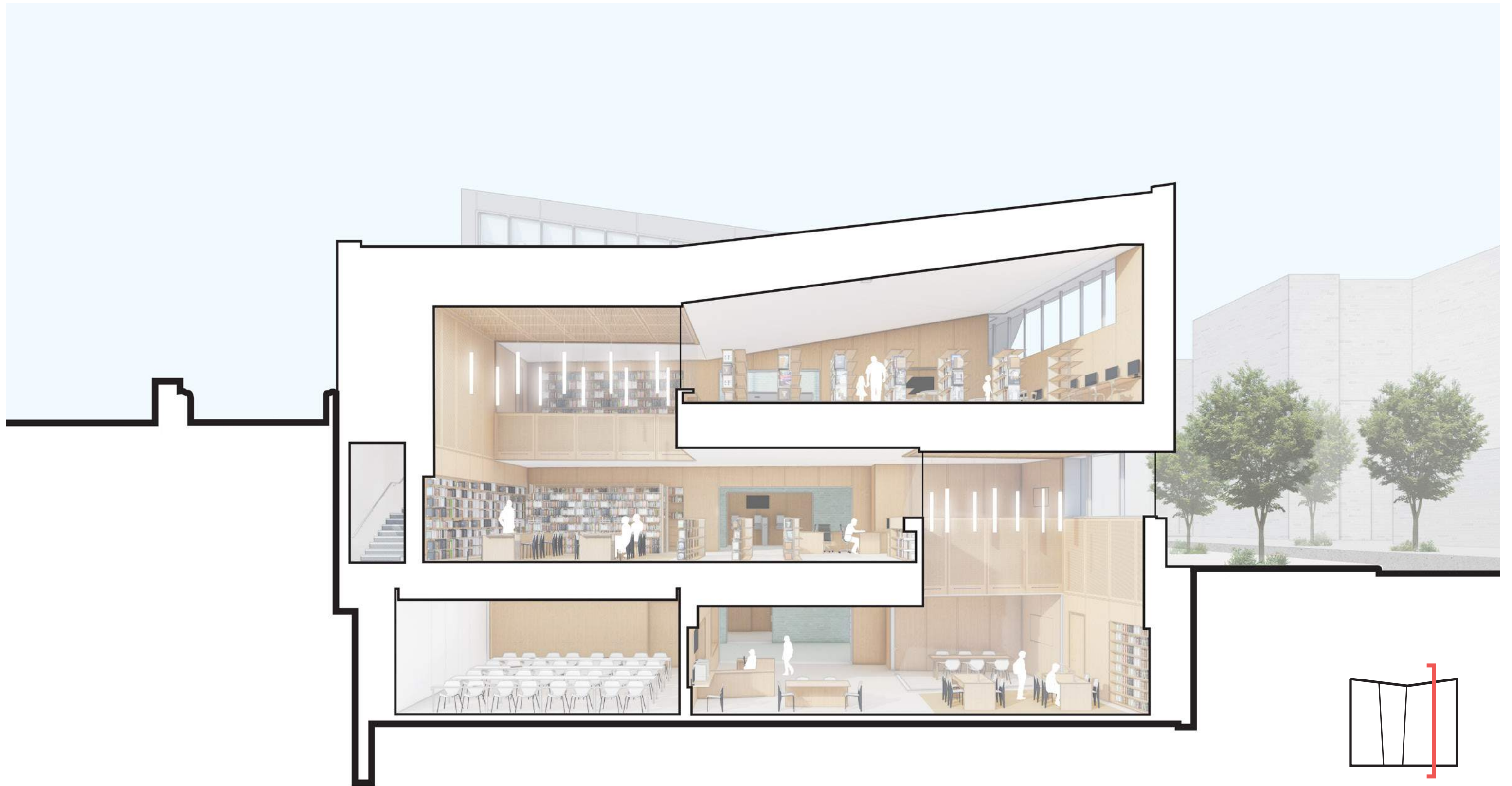














WEISS / MANFREDI
QUEENS PUBLIC LIBRARY / DDC

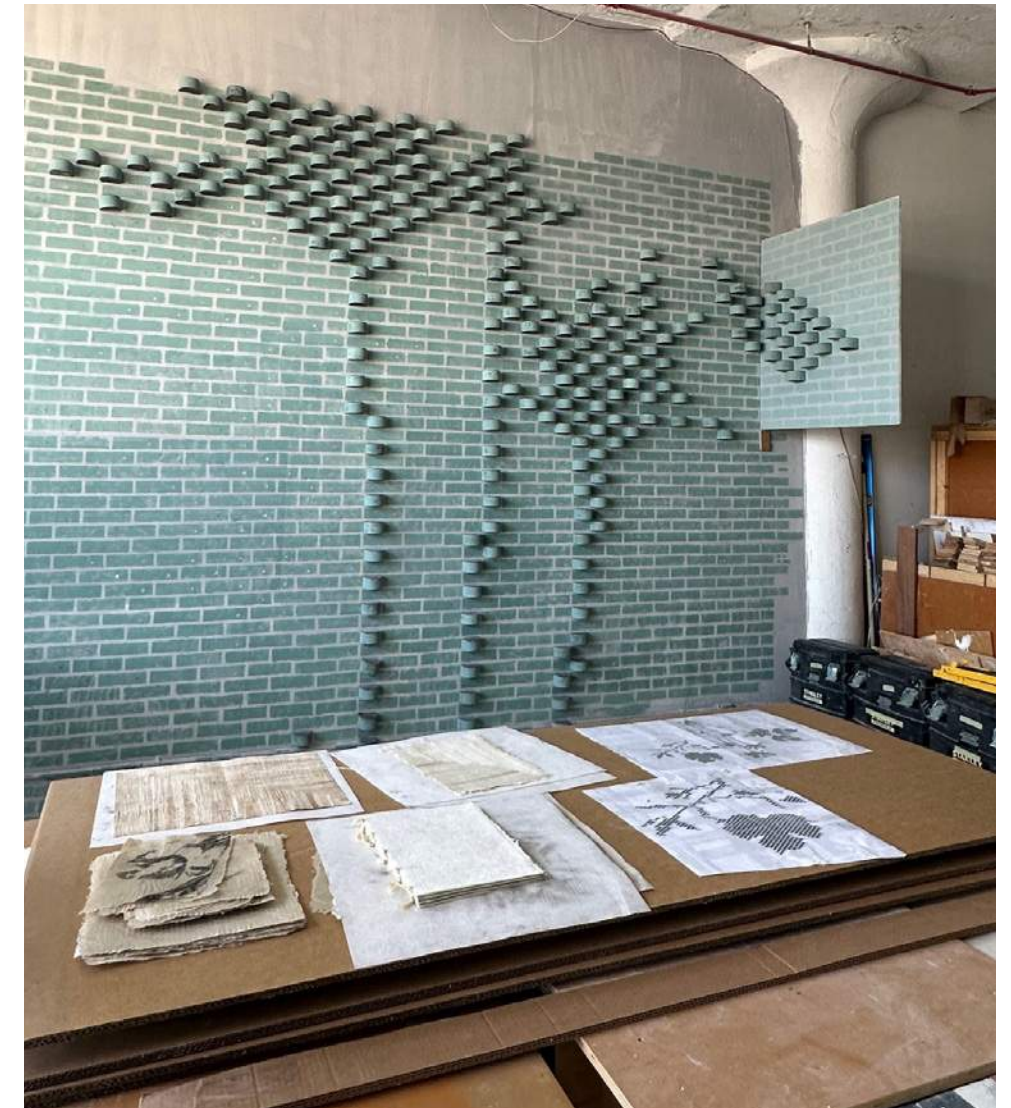
REGO PARK COMMUNITY LIBRARY
SEPTEMBER 12, 2024

PROPOSED RENDERING
VIEW OF MAIN ENTRY



WEISS / MANFREDI
QUEENS PUBLIC LIBRARY / DDC

REGO PARK COMMUNITY LIBRARY
SEPTEMBER 12, 2024



PROPOSED RENDERING
VIEW OF MAIN STAIRCASE AND % FOR ART ARTWORK



WEISS / MANFREDI
QUEENS PUBLIC LIBRARY / DDC

REGO PARK COMMUNITY LIBRARY
SEPTEMBER 12, 2024

PROPOSED RENDERING
VIEW FROM INTERSECTION



WEISS / MANFREDI
QUEENS PUBLIC LIBRARY / DDC

REGO PARK COMMUNITY LIBRARY
SEPTEMBER 12, 2024

PROPOSED RENDERING
VIEW FROM 63RD DRIVE



WEISS / MANFREDI
QUEENS PUBLIC LIBRARY / DDC

REGO PARK COMMUNITY LIBRARY
SEPTEMBER 12, 2024

PROPOSED RENDERING
VIEW FROM LIRR

POINT OF CONTACT

Anna Killion

Outreach Coordinator

Office of Community Outreach & Notification (OCON), Public Buildings

NYC Department of Design and Construction

Mobile: (347) 374-0930

Email: KillionAn@ddc.nyc.gov